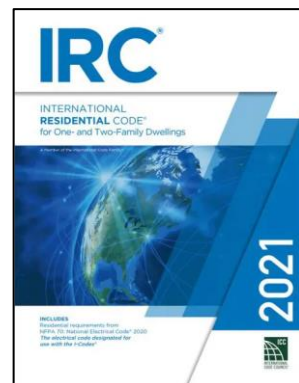
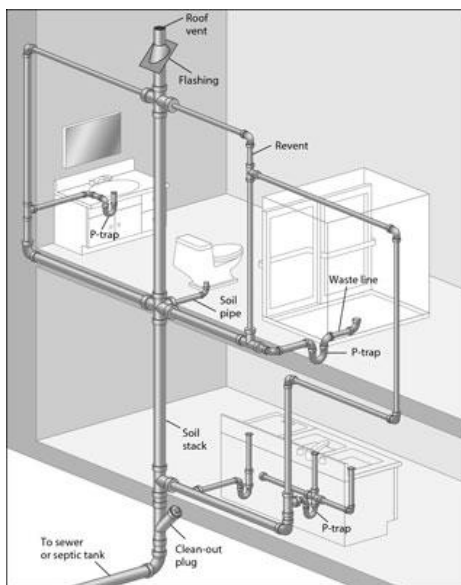




2021 IRC Plumbing Question Of The Week

What is the calculated load on DWV-system piping for two full bath groups, a kitchen group, a laundry group and a floor drain?

- A) 13
- B) 15
- C) 17
- D) 18



**TABLE P3004.1
DRAINAGE FIXTURE UNIT (d.f.u.) VALUES FOR VARIOUS PLUMBING FIXTURES**

TYPE OF FIXTURE OR GROUP OF FIXTURES	DRAINAGE FIXTURE UNIT VALUE (d.f.u.) ^a
Kitchen group (dishwasher and sink with or without food-waste disposer)	2
Laundry group (clothes washer standpipe and laundry tub)	3
Multiple-bath groups ^b :	
1.5 baths	7
2 baths	8
2.5 baths	9
3 baths	10
3.5 baths	11

For SI: 1 gallon = 3.785 L, 1 gallon per minute = 3.785 L/m.

- a. For a continuous or semicontinuous flow into a drainage system, such as from a pump or similar device, 1.5 fixture units shall be allowed per gpm of flow. For a fixture not listed, use the highest d.f.u. value for a similar listed fixture.
- b. A floor drain itself does not add hydraulic load. Where used as a receptor, the fixture unit value of the fixture discharging into the receptor shall be applicable.
- c. Add 2 d.f.u. for each additional full bath.

$$2+3+8+2+0=15$$